

# RECEPTION DESKS





**ZIG-ZAG**  
4-11



**VALDE**  
12-17



**CUBE**  
18-21

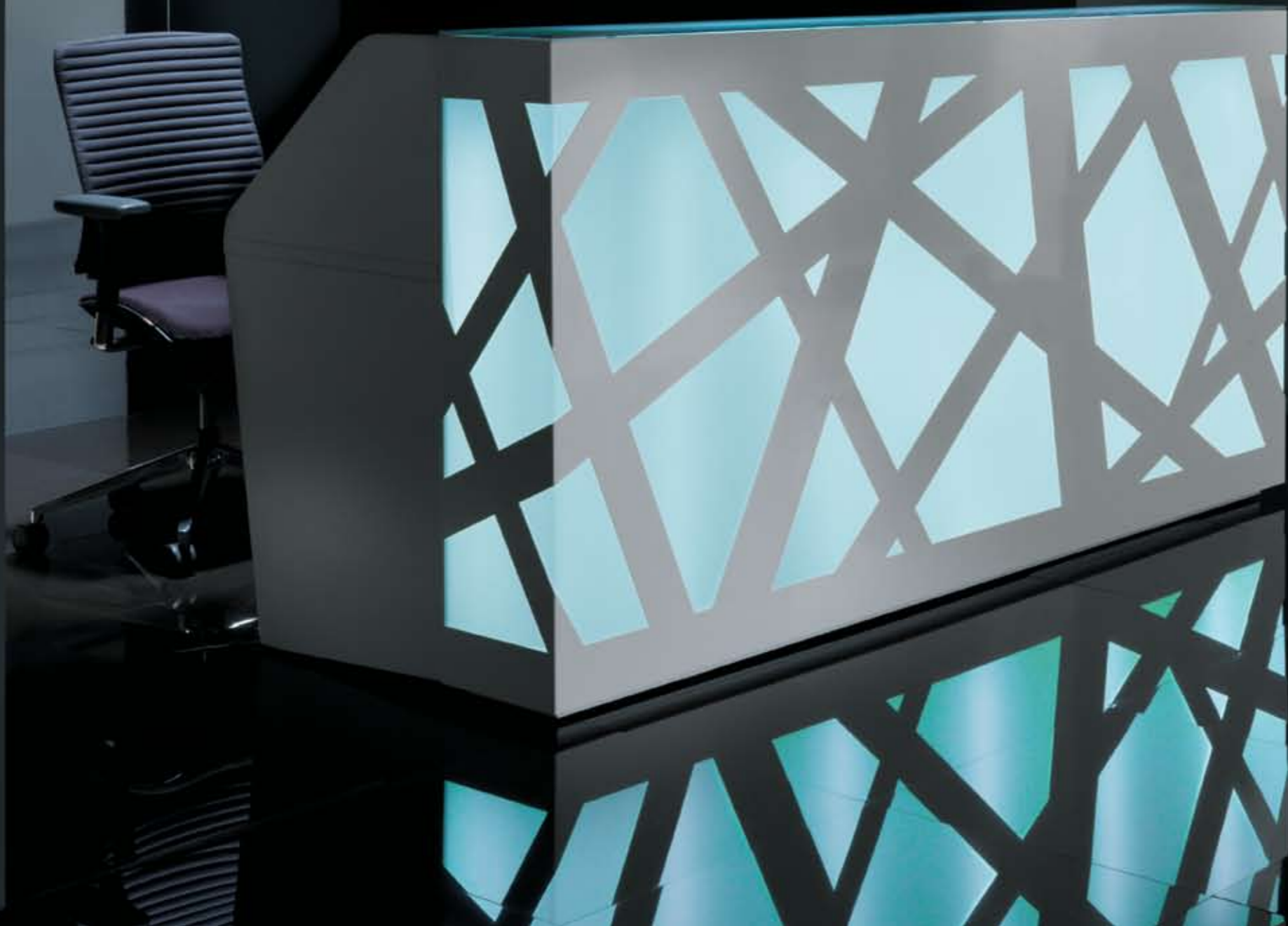


**FORO**  
22-23



**OVO**  
24-25

The reception desk with its **original form** should be enough to arrange every reception hall. It is very effective in dark rooms where it is **lightened from the inside** and fulfills a role of a spectacular halogen.



# ZIG-ZAG

All parts of the Zig-Zag reception desk match every room without any problems. The counter **can be arranged** in any way **from the modules** which may consists of one or more elements.

Let us pay attention to the reception desk with the lowered desk top which makes communication easier and works perfectly in customer service bureaus.





**White, metal openwork** wreathing subtly round the body and contrasting with the highlighted interior is a very characteristic element of the reception desk. Beautiful frontal part of the counter hides **ergonomic interior** with a wide desk top which allows to organize work at the reception desk without any problems.



Led lighting steered with a **remote control** allows to regulate **the intensity and the color of light** automatically. Pressing one button changes the color of the reception desk and

allows to light the counter in accordance with the selected program with **monotonous** or **pulsating rhythmical** colors.



The impressive and elegant reception desk creating a representative piece of furniture due to connection of **precious materials** – glass, aluminium and colored laminates. Horizontal slats made of aluminium emphasize delicately a shape and a **modern character** of the body. The desk top made of tempered white glass perfectly matches the glittering frontal part of the counter.



Due to a **wide range of available elements** the shape of the Valde reception desk can be configured in various forms – from a circle through an arch to angular and simple blocks. It allows to arrange even small reception rooms without any problems. The body of the counter includes hidden **handy shelves** for files and a **wide working table** with enough space for a computer or a printer.



**LED lighting** located under the upper desk top and at the basis of the counter makes the reception desk presenting perfectly in darker rooms.

Cool light perfectly harmonizes with whiteness while in case of a colorful front it emphasizes its color.



CUBE



A simple form system of reception desks that makes use of elements that imitate natural stone.

All elements **stand on elegant metal feet**, which add delicacy to the composition and at the same time makes levelling easier.



# CUBE

The modules are finished with characteristic **block shaped links**, which are **additional surfaces to be arranged** or used as a desk or table top. The block from one version could be used as a handy bookshelf – which is available from the inner side of the reception.

# FORO

Unique, **cubist shape** of the reception desk makes the character of the room very expressive. Two overlapping rectangles available in four color variants – **white, green, red** and **orange** create the front of the counter.

Glitter of the frontal parts contrasts with the matt body and the desk top which can be white or chestnut. Not so big body of Foro is extremely capacious and offers enough space for essential devices and stationery.





OVO

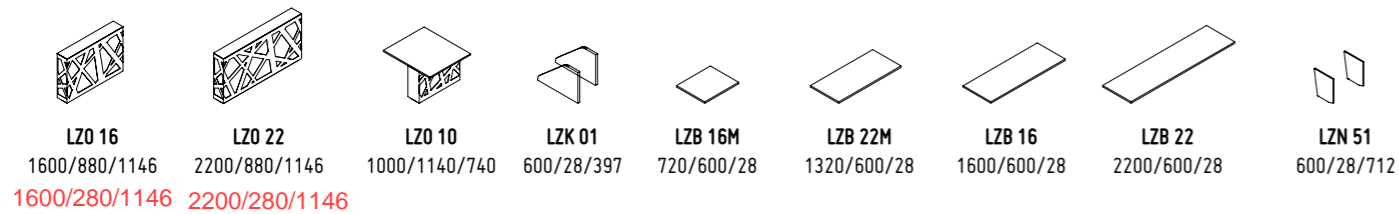


Ovo is a multifunctional reception desk dedicated to small rooms or customer service bureaus. Due to a **lowered desk top** it is easy to communicate with a client in a sitting position. The common part of the desk top allows to deal with documents easily and provides trouble-free communication. The lifted part of the reception desk includes a **hidden**

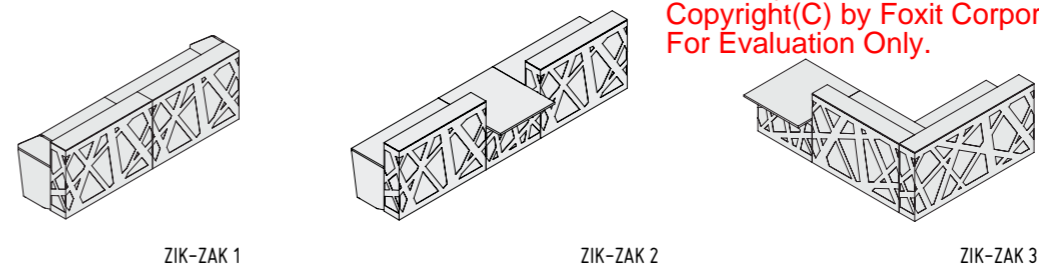
**computer stand** and the vertical shelf for files and documents. Apart from ergonomics the Ovo reception desk offers an interesting form connecting a white oval of the desk top with a dark rectangle of the body and the frontal part of furniture produced in two optional colors - cocoa and chestnut.

A: 67 B: 67 C: 67 D: 67

# ZIG-ZAG



ZIG-ZAG example sets:

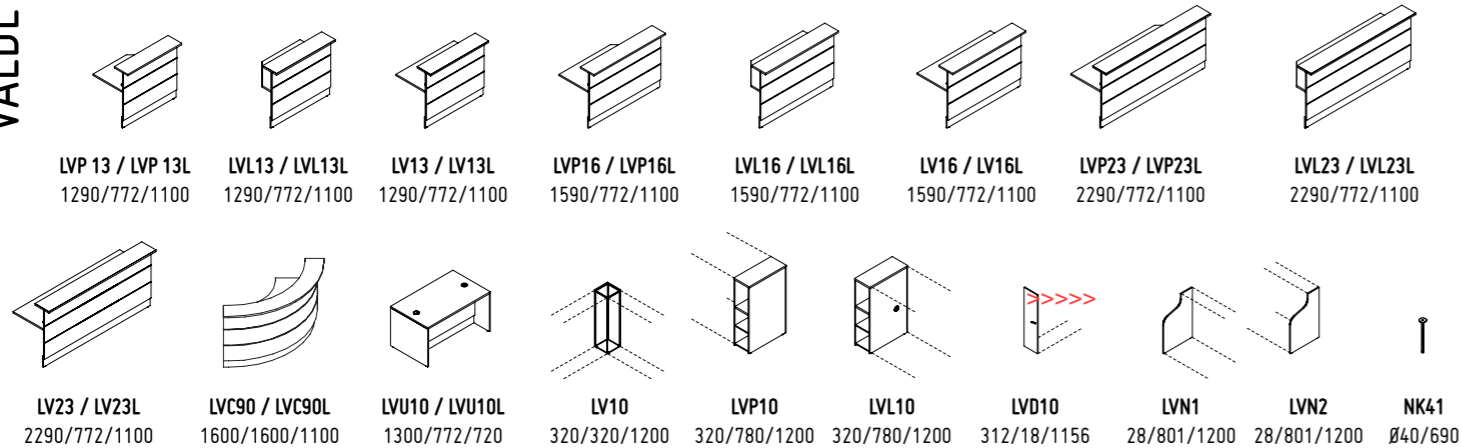


Edited by Foxit Reader  
Copyright(C) by Foxit Corporation,2005-2010  
For Evaluation Only.

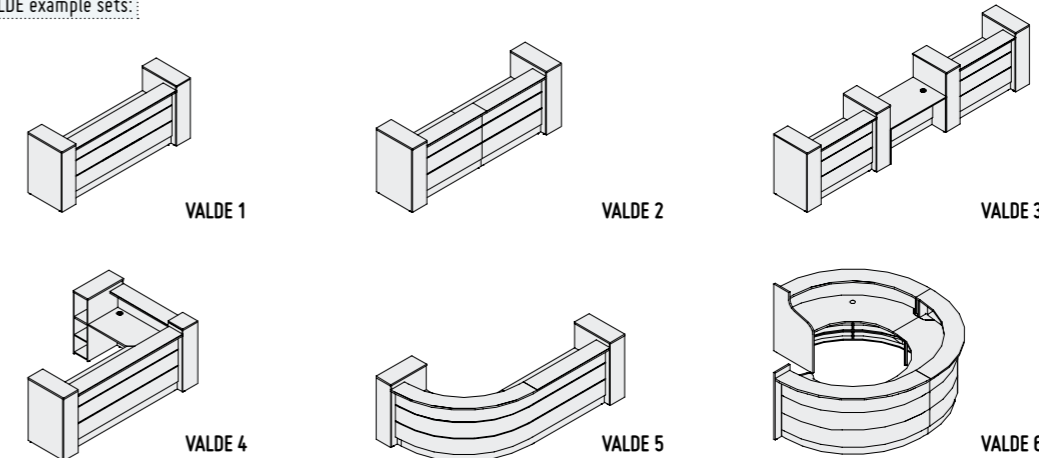


A: 67 B: 67 C: 67 D: 72/73/74/82 F: 34/67

# VALDE

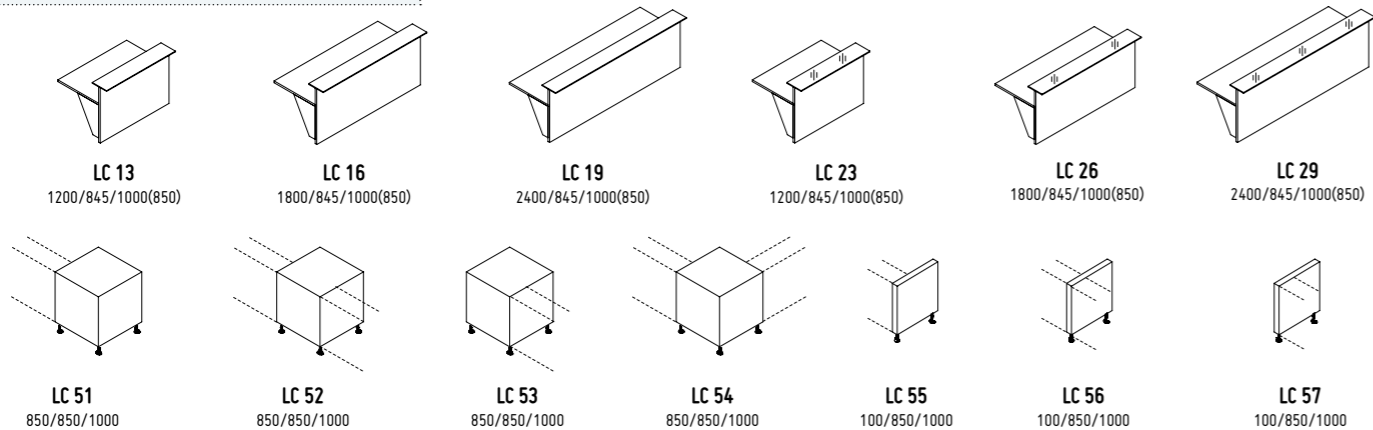


VALDE example sets:

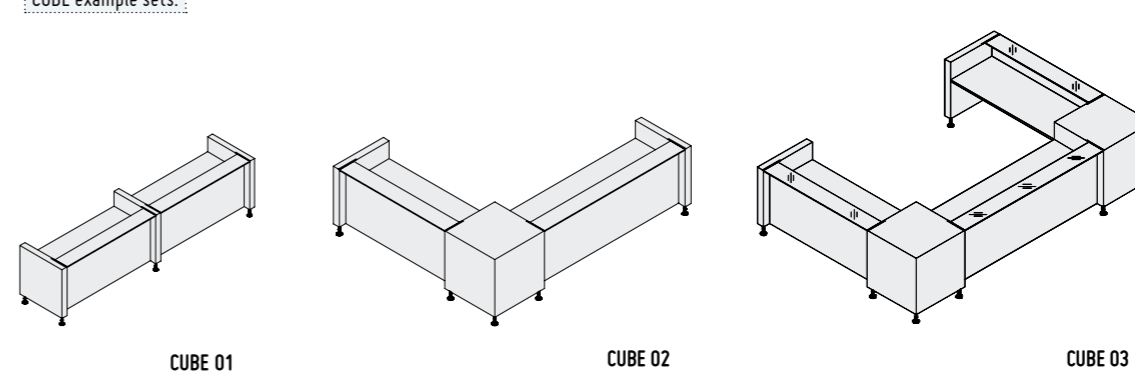


A: 31/34/64/67 B: 23/31/34/64/67 D: 23/31/34/64/67 F: 01/23/31/34/35/67

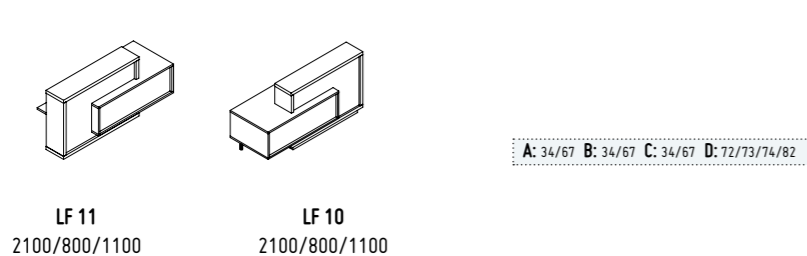
# CUBE



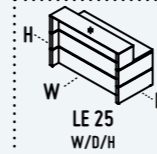
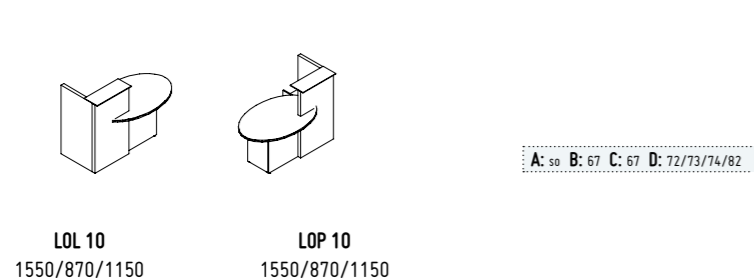
CUBE example sets:



# FORO



# OVO



A Upper work-top      C Body/Sides      E Arch front  
 B Work-top      D Straight front      F Cube / foot

**IKER** The partner (co-organiser) is IKER a producer of modern upholstery furniture, chairs and lighting. The followings pieces of furniture were used: Lemming, Trim and Magnetic. We welcome everyone to see the full range of our collection at [www.iker.com.pl](http://www.iker.com.pl)

